

TM50 Touch User Guide - Magellan and Spectra SP Systems

MAGELLAN™

SP
SPECTRA



Supplied and
installed by

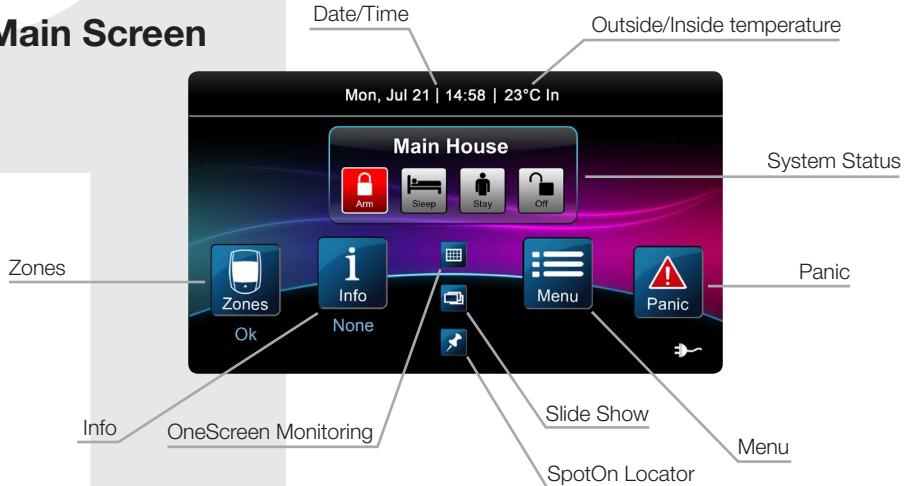
eagle *alarms*
CENTRAL + EASTERN

Specialists in residential + commercial burglar alarms

P ▲ R ▲ D O X™

09 535 7117 www.eaglealarms.co.nz

Main Screen



Arming/Disarming your System

Arming/Disarming your system:

1. Select arming method by pressing corresponding button from main screen.
2. Enter code (4 to 6 digits).



Menu

For menu options press the Menu button and follow the on-screen prompts. Menu options include:

- Bypass Zones
- PGMs
- Alarm Clock
- Zone Chiming
- Clean Screen
- Add-on
- Settings
- System Setup



Entering User Programming

Enter user programming:

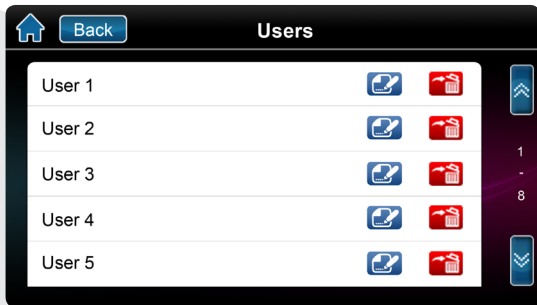
1. Press **Menu**.
2. Press **System Setup**.
3. Enter Master Code.
4. From the Master Programming menu press **Users**.



Programming a New User

Programming a new user:

1. Press **Add** button to add a user.
2. Enter the new User Code and press **Save** button.
3. Confirm User Code by entering a 2nd time then press **Save**.
4. Option to learn remote in, press button on remote or press **Skip**.
5. User is now valid.



Settings Screen

Setting screen accessed through Menu then Settings.


Settings include:

- Display Settings
- Sound
- Slide show
- Home Page
- Language
- Update Firmware
- Calibrate Sensor
- Product Info



OneScreen Monitoring™

To Access OneScreen Monitoring*:

1. Press the  button.
2. View open/closed zones (an open door means a zone is open).
3. Press on the **Test** button to test all your zones (SoloTest Mode).
4. Press on the **Settings** button (top right corner) to access more options.

*OneScreen Monitoring is an optional feature.
Please contact your installer for more information.




MAGELLAN™

SP
SPECTRA

SpotOn Locator™

To Access SpotOn Locator*:


1. Press the  button.
2. Follow the onscreen instructions on how to upload photos, images, or schematics for your personalized floor plans.
3. Follow the onscreen instructions on how to add/move/delete zones from your floor plan.

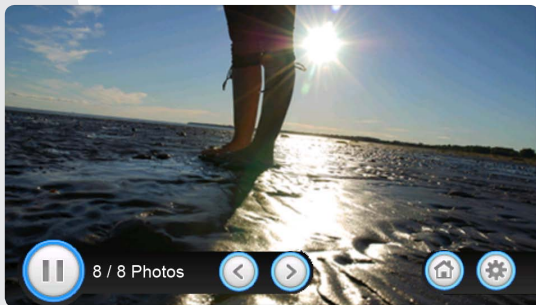
*SpotOn Locator is an optional feature. Please contact your installer for more information.



SlideShow

To Access SlideShow:

1. Press the  button to view the default slideshow.
2. Press on the **Settings** button (bottom right corner) to access more options.





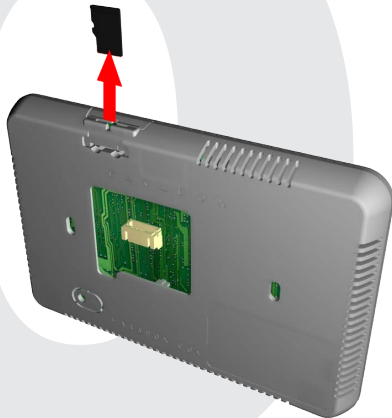
microSD Card

The TM50's integrated SD card slot has a cover clip for its protection.

If it is foreseen that the microSD card will be used frequently, it is best that the microSD card cover clip be removed before installation. This is because once the keypad is installed, removal of the microSD card requires you to unclip the entire front plate of the TM50.

To remove/replace the microSD (without cover clip):

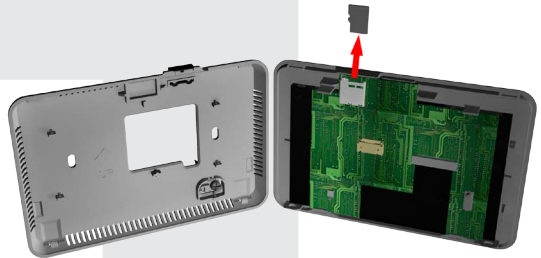
1. Push down on the microSD card to unlock.
2. Gently pull out the microSD card to remove.
If desired, replace card.



microSD Card

To remove/replace the microSD card with cover clip:

1. Using a screwdriver, pry the front housing assembly from the backplate. Once removed, you will notice that the microSD cover clip protection is part of the backplate.
2. Remove the microSD card from the front housing assembly. If desired, replace card.



Notes

Warranty: For complete warranty information on this product, please refer to the Limited Warranty Statement found on the Web site www.paradox.com/ terms. Your use of the Paradox product signifies your acceptance of all warranty terms and conditions. One or more of the following US patents may apply: 7046142, 6215399, 6111256, 6104319, 5920259, 5886632, 5721542, 5287111, and RE39406 and other pending patents may apply. Canadian and international patents may also apply. © 2013 Paradox Ltd. All rights reserved. Specifications may change without prior notice. www.paradox.com

To Change the Master Code

(highly recommended on first use)

1. Touch keypad screen to activate
2. Select **Menu**
3. Select **System Setup**
4. Select **Users**
5. Enter the default alarm code – **1, 2, 3, 4**
6. Select **User 2** (the Master Code)
7. Enter your **new code** and select **Save**
8. Type the code in again to confirm
9. Select **Save**
10. Your Master Code has now been changed

To Add an Additional User

1. Touch keypad screen to activate
2. Select **Menu**
3. Select **System Setup**
4. Select **Users**
5. Enter your Master code (see above)
6. Select the **plus sign** next to the relevant User (e.g. User 3)
7. Enter the **new code** and select **Save**
8. Type the code in again to confirm
9. Select **Save**
10. Your New User has now been created

At Eagle Alarms we are here to help with your security needs
24/7.

Please note, your alarm system has a comprehensive 2 year parts and labour warranty for your convenience.

In addition, for total peace of mind, your alarm system can be monitored 24/7 from as little as \$26 per month.

That's less than \$1 a day!

If you sign a 12 month contract we also offer the choice of two months free monitoring, or a free fire extinguisher!

So what are you waiting for?
Call us NOW for total peace of mind!

09 535 7117

Or visit our website at:
www.eaglealarms.co.nz

TM50M-EU01

Printed in Canada 02/2013